

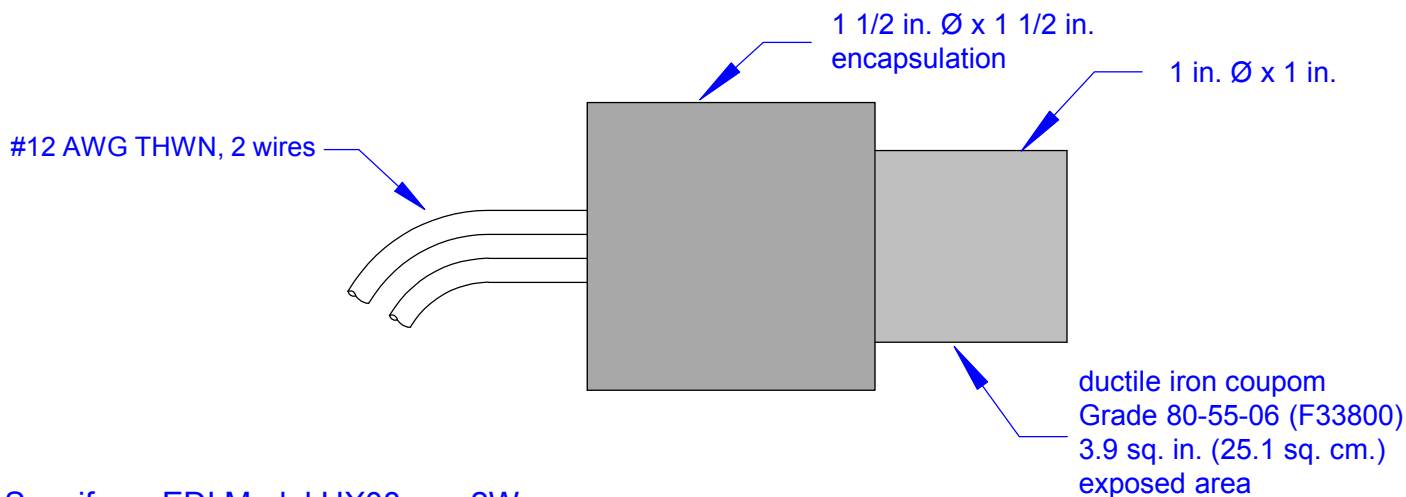
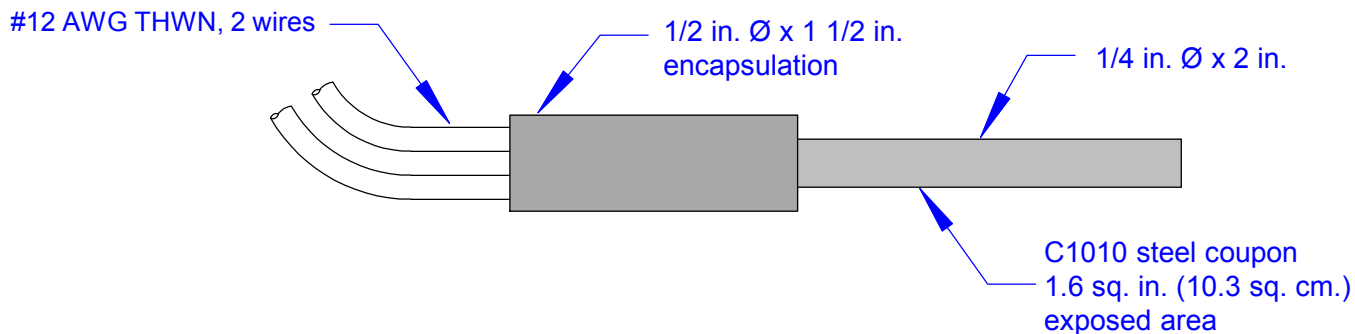
Model UX – Special Products

EDI can customize any of its underground products or design special products to meet the unique requirements of a particular application. These products are designated as Model UX followed by a sequence number. Contact us for additional information on any of these products.

Special and Custom Underground Products:

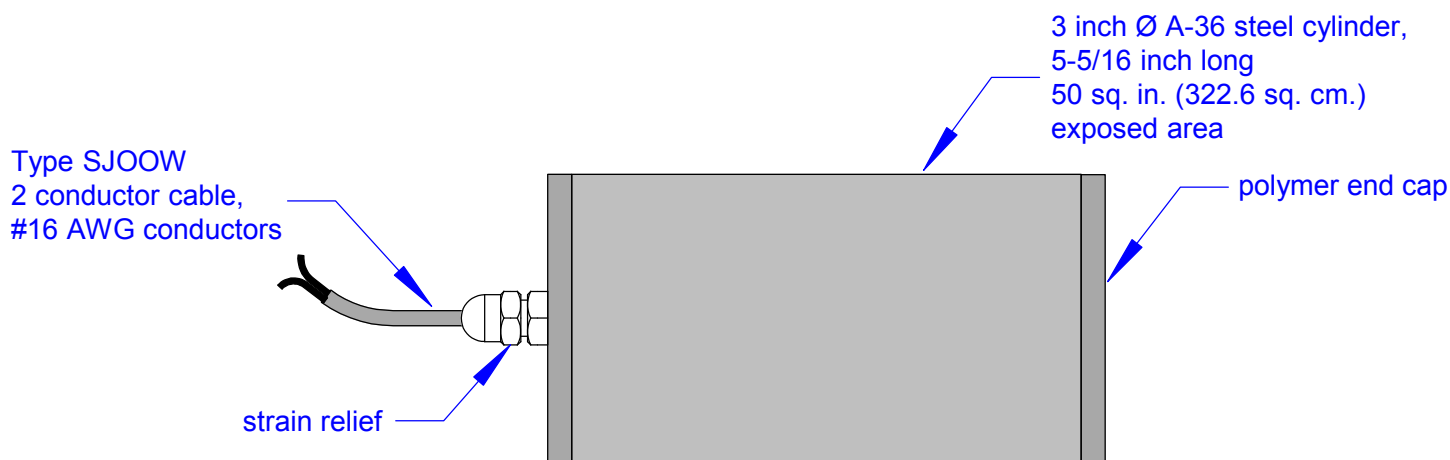
<u>Model</u>	<u>Description</u>
UX08	Model UX08 is a cylindrical metal coupon, either steel or ductile iron.
UX09	Model UX09 is a variant of Model UL bagged underground reference. It has been adapted for installation at the bottom of a test station riser.
UX10	Model UX10 is a multiple reference assembly consisting of 2 USs plus a ½ inch (1.2 cm) diameter rod coupon encased in cement. The entire assembly is contained in a cotton bag and encapsulated in backfill.
UX15	Model UX15 is Model UL reference electrode and a #4 rebar coupon encase in cement, the entire assembly is contained in a cotton bag filled with gypsum bentonite backfill.

U Series
Underground
Reference
Electrodes



Specify as EDI Model UX08-xxx-2Wnnn
where nnn is length of lead wires in feet, color as specified.
and xxx is coupon material
STL is C1010 steel
DCI is F33800 ductile iron

Full Scale



Specify as EDI Model UX08-A36-LWnnn
where nnn is length of lead wires in feet

Half Scale

Ductile iron and steel coupons



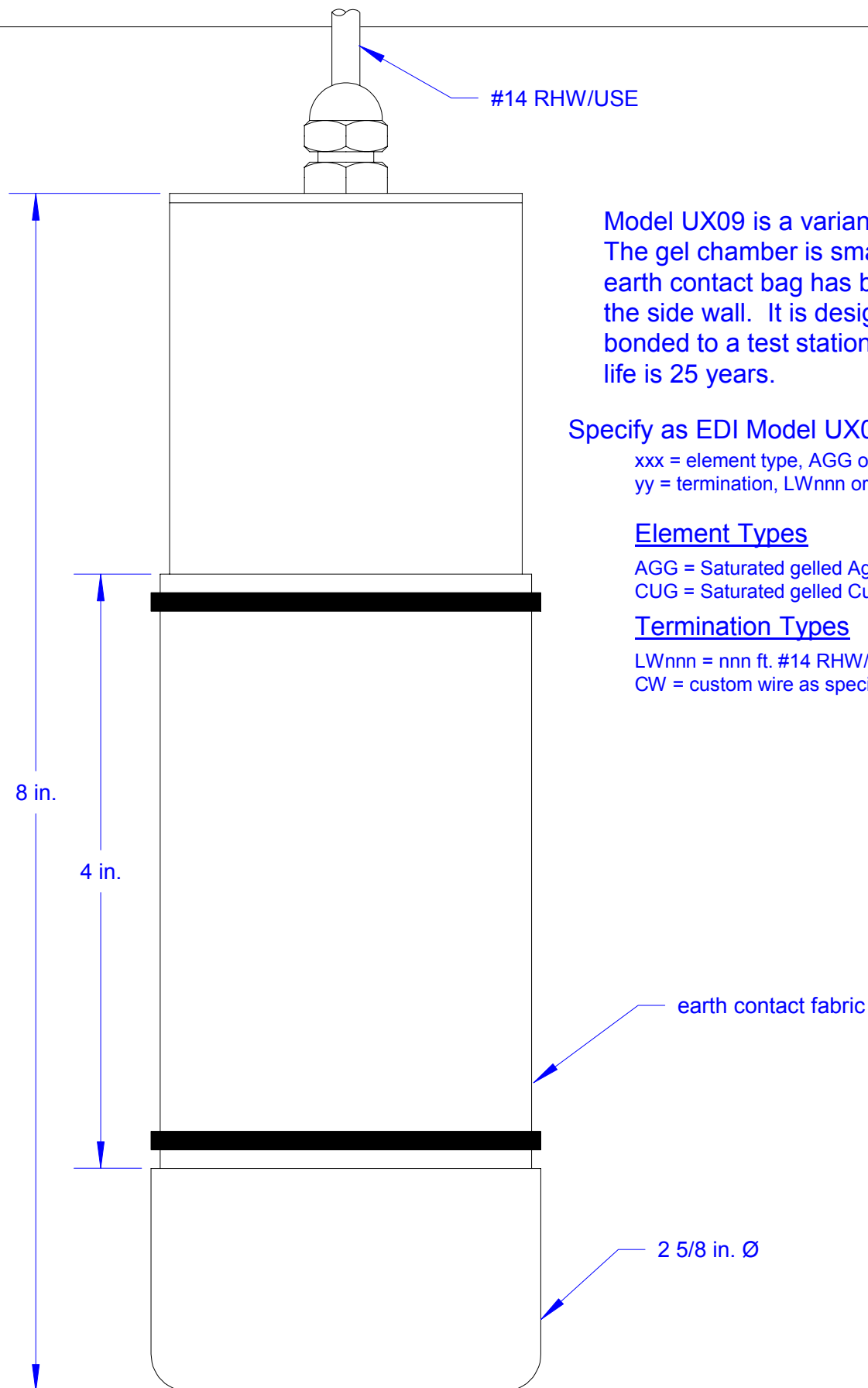
© EDI
2015

SCALE 1/2 & FULL

DRAWN BY FJA

DATE 3 JUL 2015

DRAWING NUMBER UX08 - 3



Model UX09 is a variant of Model UL. The gel chamber is smaller and the earth contact bag has been moved to the side wall. It is designed to be bonded to a test station riser. Design life is 25 years.

Specify as EDI Model UX09-xxx-yy where

xxx = element type, AGG or CUG

yy = termination, LWnnn or CWnnn

Element Types

AGG = Saturated gelled Ag/AgCl

CUG = Saturated gelled Cu/CuSO₄

Termination Types

LWnnn = nnn ft. #14 RHW/USE lead wire

CW = custom wire as specified by customer

Riser Shoe Reference Electrode



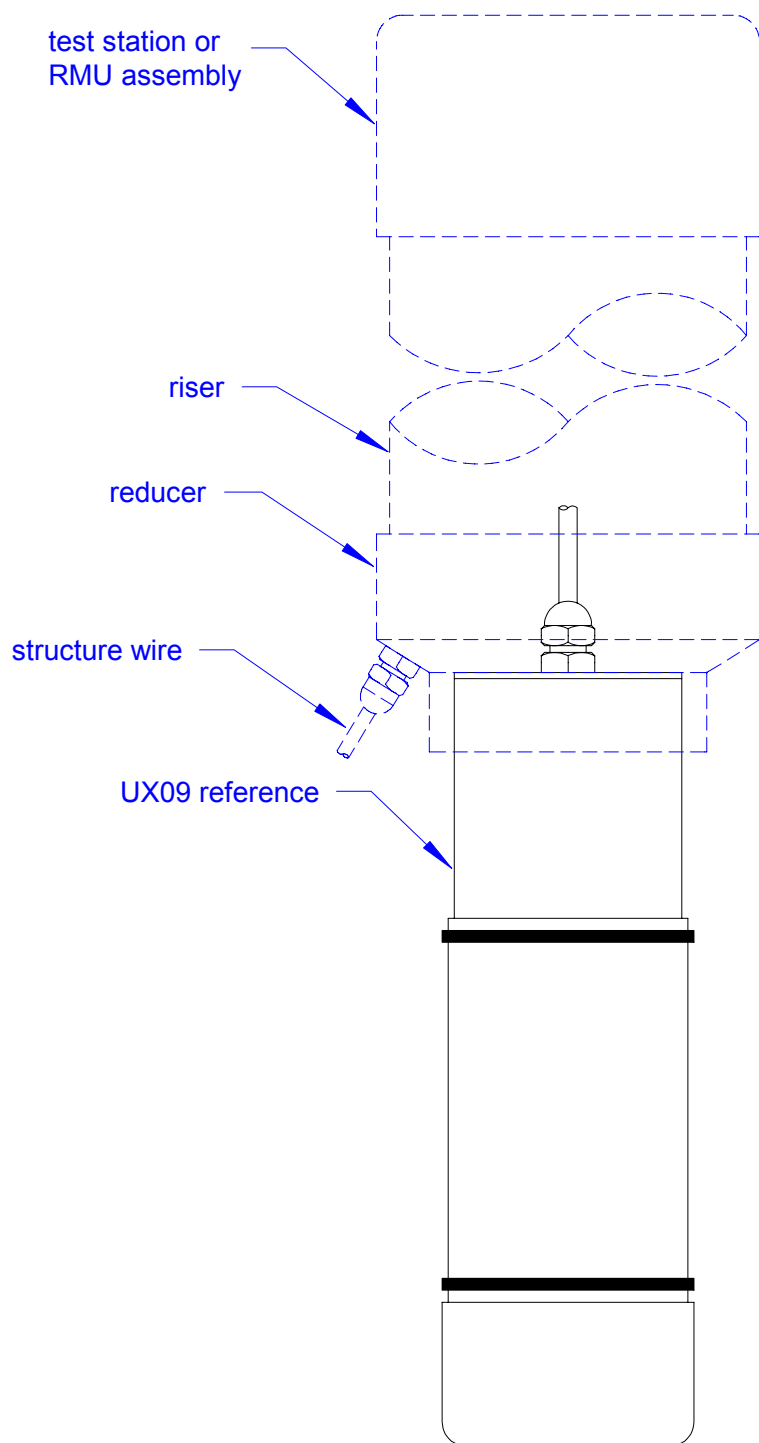
© EDI
2015

SCALE FULL

DRAWN BY FJA

DATE 6 JUL 2015

DRAWING NUMBER UX09 - 2



Typical installation of Model UX09 reference electrode on an RMU or test station riser. Components shown in dashed lines are user supplied.

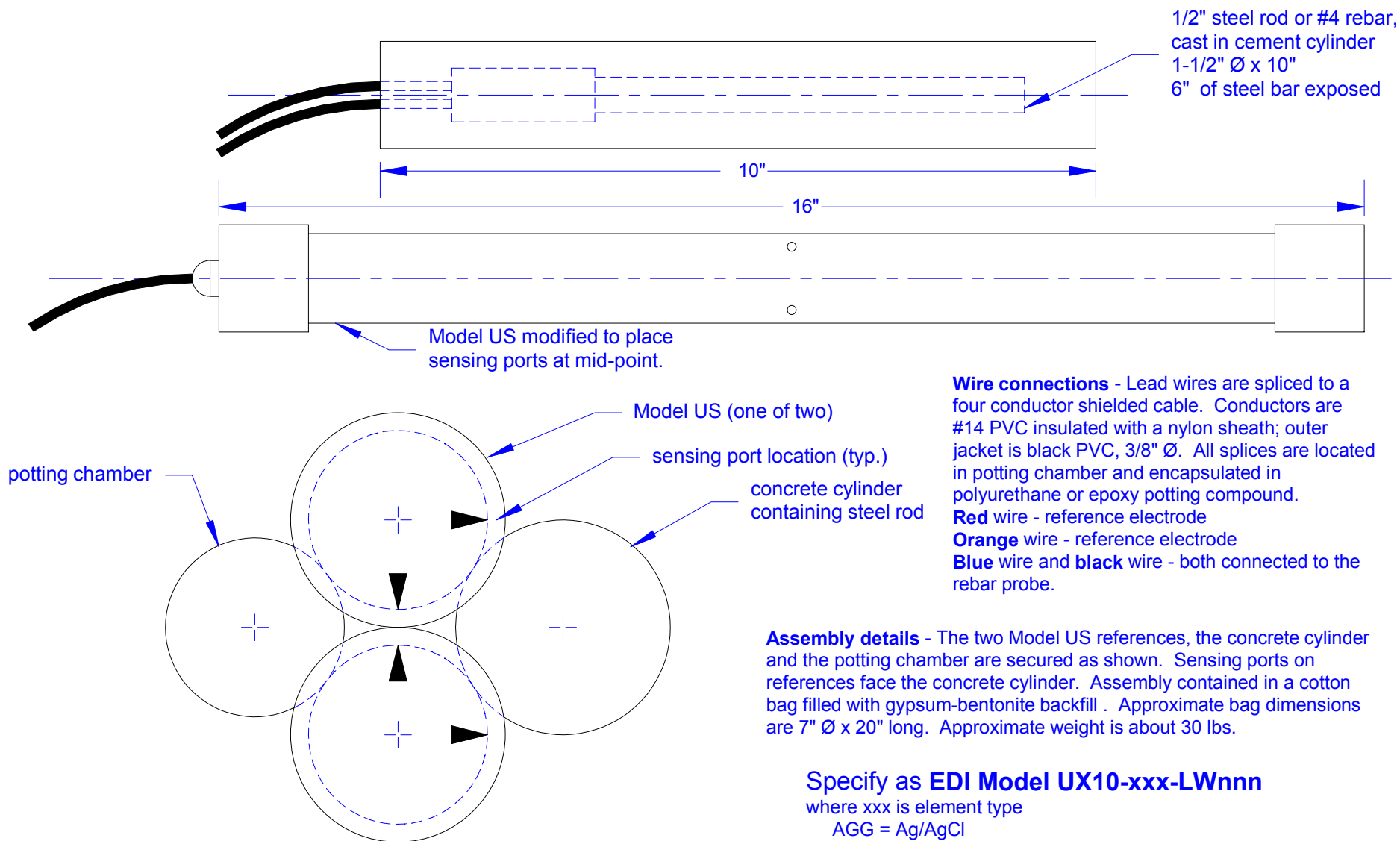
After installation, fill hole to top of reference electrode with a moisture retaining backfill consisting of 75% sand and 25% bentonite. This will minimize the chance of the reference electrode drying out.

Installation of Riser Shoe Reference Electrode



© EDI
2015

SCALE	HALF
DRAWN BY	FJA
DATE	6 JUL 2015
DRAWING NUMBER	UX09 - 3



UX10 Multiple Reference Assembly

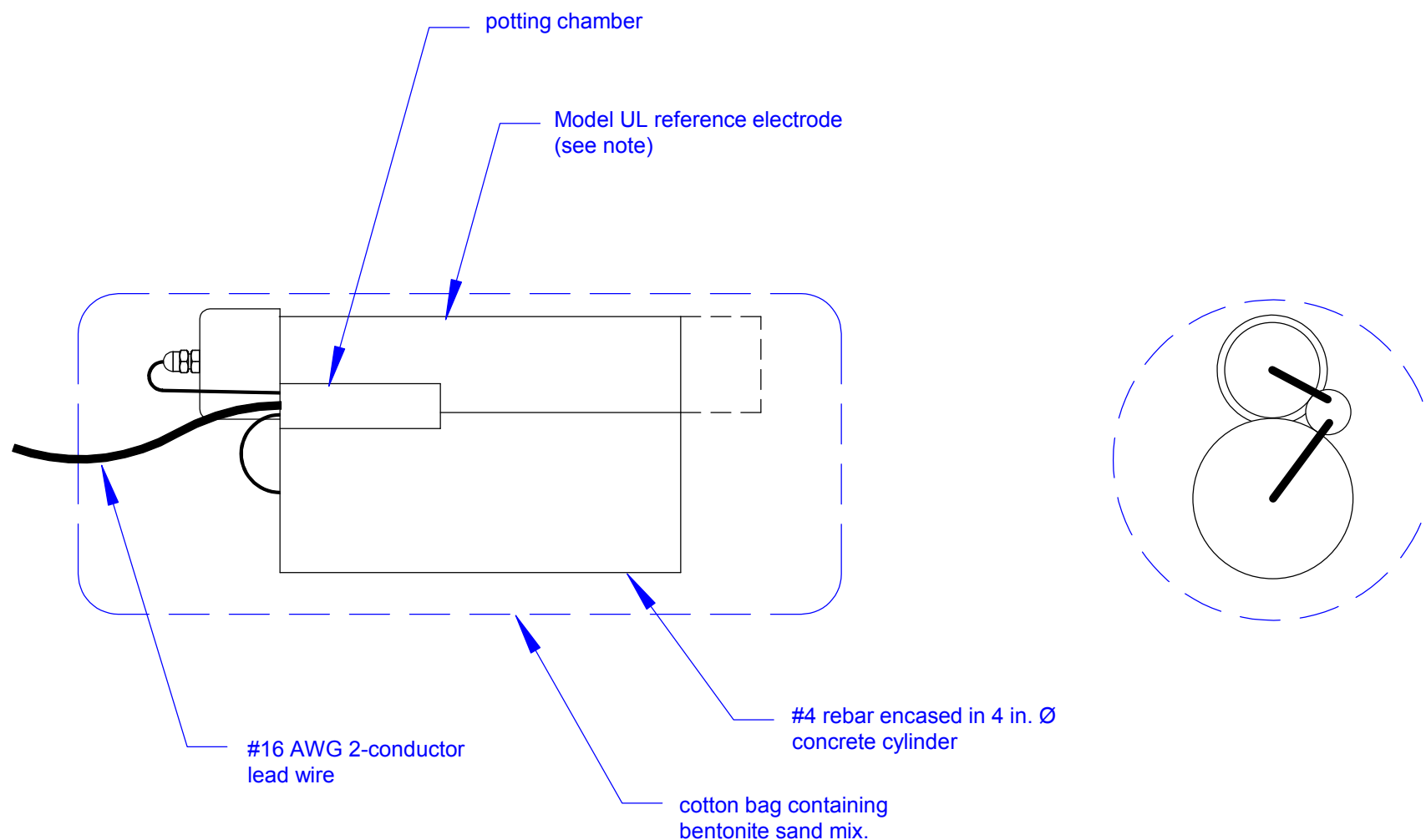
© EDI 2015

SCALE VARIES

DRAWN BY FJA

DATE 12/07/09

DRAWING NUMBER UX10 - 1



Note: Model UL50 (50 year design life) can be substituted for the Model UL. This will extend the electrode length as shown by the dashed line. The model designation for the extended life reference is Model UX15A-xxx-LWnnn.

Specify as EDI Model UX15-xxx-LWnnn
where xxx = element type (CUG for Cu/CuSO₄ or AGG for Ag/AgCl)
and nnn = lead wire length in feet.



Packaged reference and rebar coupon

© EDI 2013

SCALE 1:4

DRAWN
BY FJA

DATE 22 JAN 2013

DRAWING
NUMBER UX15ASY - 1