

find it...  
with Fisher



Fisher Research Laboratory has been supplying the needs of the underground utility industry for over 70 years. From the very first metal detectors to the digital equipment of today, if your looking for an affordable, tough and simple to use instrument offering superior quality and performance, find it... with Fisher, today!

### STUART STEEL PROTECTION CORP.

BOX 476  
SOUTH BOUND BROOK, NJ 08880  
PHONE (732) 469-5544  
FAX (732) 469-9270  
E-mail: [sspccmail@worldnet.att.net](mailto:sspccmail@worldnet.att.net)  
Website: [www.stusteel.com](http://www.stusteel.com)



### STUART STEEL PROTECTION CORP.

BOX 476  
SOUTH BOUND BROOK, NJ 08880  
PHONE (732) 469-5544  
FAX (732) 469-9270  
E-mail: [sspccmail@worldnet.att.net](mailto:sspccmail@worldnet.att.net)  
Website: [www.stusteel.com](http://www.stusteel.com)

**& LOCATING EQUIPMENT**  
Pipe & Cable Locators  
Liquid Leak Detectors  
Valve, Box, Rebar, Iron, Locators  
Water Level Indicator  
Ultrasonic Detector



## 2 YEAR LIMITED WARRANTY

All Fisher Industrial instruments are guaranteed for 2 years to be free of defects in materials and workmanship when shipped from the factory. The terms of the warranty are fully explained in a warranty card that accompanies each product. Complete factory and field service facilities support this warranty. Fisher Research Laboratory does not warrant suitability to specific use, and shall in no event be liable for any direct, incidental, or consequential damages. (Warranty may vary outside of the United States. See your distributor for details.)

### DETECTING & LOCATING EQUIPMENT

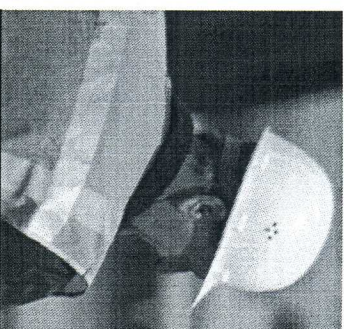
- M-66 Valve & Box Locator
- M-96 Valve, Pedestal & Box Locator
- M-101 Rebar Locator & Metal Probe
- FX-3 Ferro Magnetic Metal Detector
- TW-8800 Multi-Freq. Digital Line Tracer
- TW-7700 Single-Freq. Digital Line Tracer
- TW-6 Pipe & Cable Locator
- XLT-20/XLT-20CE Acoustical Leak
- XLT-16 Liquid & Gas Leak Detector
- WLT Water Level Indicator
- XLG-80 Ultrasonic Detector

Inquiries outside of the U.S. Mexico & Canada Contact:

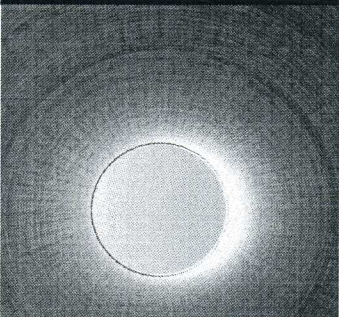
### FISHER EXPORT DEPARTMENT

P.O. Box 1896, New Haven, CT 06508, USA  
Tel 203.288.1638 Fax 203.287.8099  
email: [mb@exportdept.com](mailto:mb@exportdept.com)

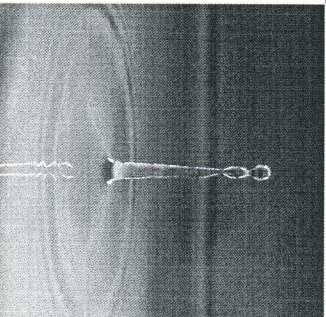
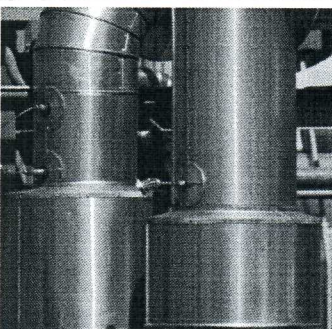
FRL #8740010



Detecting  
& Locating  
Equipment



Since  
1931



# Since 1931

## FISHER RESEARCH LABORATORY

underground utility instruments

### M-66

#### Valve & Box Locator

Fishers M-66 Valve and Box Locator is designed specially for finding buried or paved over valves, box's or vaults. In addition, the M-66 locates survey markers, water or gas meters, conduit, manholes and any other concealed metallic object. Combining sensitivity and accuracy with maximum ground penetration, the M-66 eliminates any guesswork when pinpointing hidden metallic objects.

### M-96

#### Valve, Pedestal & Box Locator

The advanced yet easy to use Fisher M-96 Valve, Pedestal and Box Locator is designed specially for finding buried or paved over valves, box's or vaults and any other concealed metallic object. The M-96 features push button tuning allowing the user to quickly and easily maintain optimum sensitivity for easy pinpointing of buried metallic objects. Plus, autotune circuitry, a waterproof search coil and a rugged electronics housing make the M-96 ideal for field use.

### M-101

#### Rebar Locator & Metal Probe

The Fisher M-101 metal detector was designed specially for finding reinforcing bars and other metal objects embedded in concrete, conduits, PK nails, wiring, wall studs and other metallic objects. Users may expect accuracy to 1/4" of the center line of the rebar. The M-101 can also effectively locate small metal items carried on or within a person and is substantially more sensitive than the average low cost metal detectors used at airports.

### FX-3

#### Ferro Magnetic Metal Detector

The Fisher FX-3 locates buried survey markers, pipes, well casings, valves, iron relics, septic tanks, and other iron or steel objects. The easy to use and extremely sensitive FX-3 will locate buried iron objects far beyond the reach of ordinary metal detectors.

### Multi-Frequency Digital Line Tracer TW-8800

The state-of-the-art TW-8800 utilizes advanced digital signal processing for precision locating performance yet is extremely easy to use. Three active frequencies provided by the transmitter, and two passive modes for tracing without the transmitter, are provided. The lightweight multi-frequency receiver is simple to use. The display is a large and easy to read LCD that gives the user all the necessary information to do the job. A digital keypad allows the user to select the desired operating mode, set the volume level, check the battery level, or activate an LCD backlight. Depth measurement is done at the push of a button. The transmitter allows the user to locate in either a conductive or inductive mode, plus, set up is simple and quick with only a meter and switch. In the Fisher Tradition, the TW-8800 is affordable and easy to use while providing maximum performance.

### Single-Frequency Digital Line Tracer TW-7700

The Fisher TW-7700 is extremely easy to use yet utilizes advanced digital signal processing for precision locating performance. The lightweight receiver includes a large and easy to read LCD display that gives the user all the necessary information to do the job. A digital keypad allows the user to set the volume level, check the battery level, or activate an LCD backlight. Depth measurement is done at the push of a button. The user may locate in either a conductive or inductive mode using the transmitter while a meter and switch make transmitter set up simple and quick. Durability, dependability and ease of use make the TW-7700 ideal for field use.

### Pipe & Cable Locator TW-6

The Fisher TW-6 "two box" metal detector finds underground pipes, cables, man-hole covers, vaults, valve boxes and other metallic objects. The unit uses the same time tested two box design patented by Dr. Gerhard Fisher in 1937 - the first U.S. patent ever issued for a metal detector. With almost seven decades of engineering excellence and state-of-the-art electronics behind it, the TW-6 is a locator you can count on.

### XLT-20/ I-20CE

#### Acoustical Leak Detector

The Fisher XLT-20 & XLT-20CE combine advanced acoustic detection methods with electronic amplification and filtering to detect and pinpoint leak sounds - such as poor sound conductors, even in poor sound conductors, such as PVC and cement pipe, under all types of earth and pavement and even in water filled cavities. The unit also detects leaks at valves, couplings, meter boxes and tanks, through cement slabs, decking, walls, radiant heating systems and encased pipe. Top performance for a low price.

### Liquid & Gas Leak Detector XLT-16

The Fisher XLT-16 is a revolutionary leak detector with both a sonic range to sense liquid leaks and an ultrasonic range to sense gas leaks. The ultrasonic range can also locate liquid leaks if air is added to the system, causing a spattering sound at the leak location. The unit finds leaks in four easy steps: by amplifying sounds, filtering out noise, isolating the leak sound and leading the operator to the leak source.

### Water Level Indicator WLT

The Fisher WLT water level indicator provides an economical and reliable method of obtaining accurate water level data in water wells under a wide variety of conditions. The unit comes with high tensile steel tape calibrated in feet or metric units. The measuring tape is covered by a rugged coating encasing the wire leads along the edge ensuring long life and reliability.

### Ultrasonic Detector XLG-80

The Fisher XLG-80 ultrasonic detector is designed for several industrial troubleshooting applications: sensing pressurized telephone cable leaks, testing bearing wear, checking valve leaks, tiny gas leaks, steam trap leakage and corona discharge. The XLG-80 is extremely sensitive, easy to use and built to last.