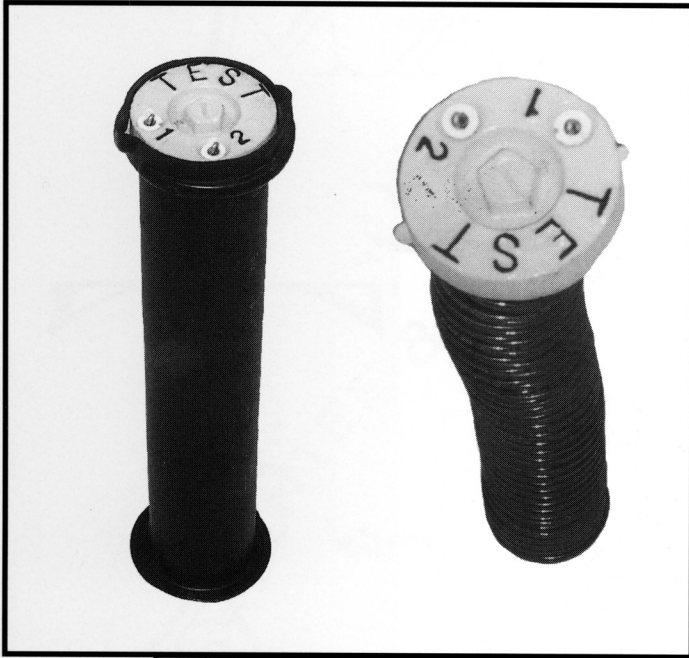


2 1/2" SHAFT CATHODIC PROTECTION TEST BOXES



P225 SR Series



P202CNG TEST

Catalog Number	Shaft Size ID	Lid Size O.D.	Approx. Wt. Lbs
P225 SR Series	2 1/2"	3"	2
P202CNG TEST	2 1/2"	3 1/2"	2

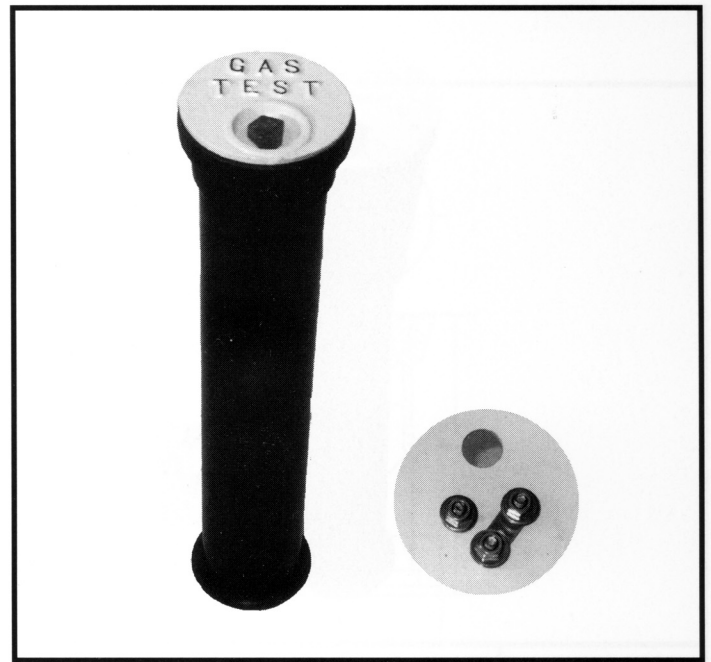
~Features and Options Available:

- Plastic rim with cast iron lids, ABS plastic body
- Test readings available without removing lid
- Pre-wired test stations with varying wire gauges, colors, lengths
- Lids available in drop turn locking and mechanical locking designs
- Telescoping test stations with separate top and bottom sections
- Custom lettering on lid available
- Available with or without flared or squared base to prevent pull-out or settling
- Length of box as desired by customer
- Terminals can also be secured in place beneath lid

2 1/2" SHAFT CATHODIC TEST BOXES



P200NFG TEST



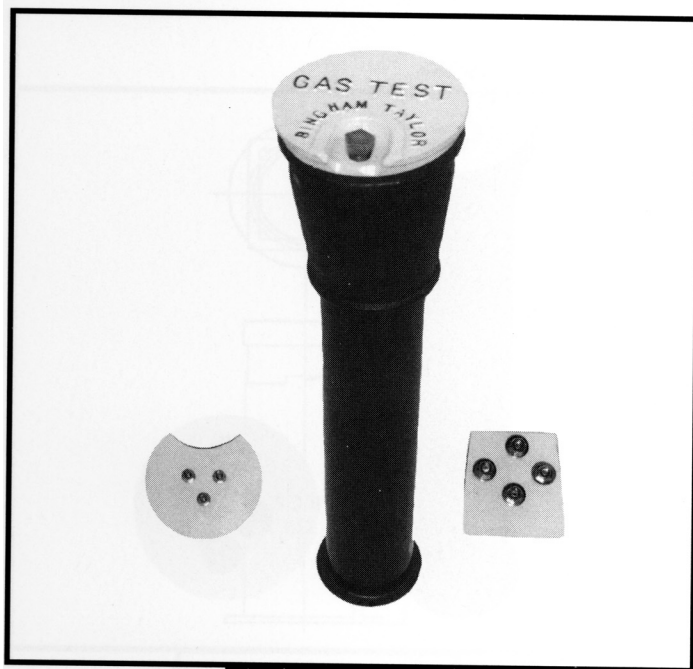
P200 TEST

Catalog Number	Shaft Size ID	Lid Size O.D.	Approx. Wt. Lbs
P200 TEST	2 1/2"	4"	3
P200 NFG TEST	2 1/2"	3 1/4"	3

~ Features and Options Available:

- Cast Iron rim and lid, ABS plastic body
- Lids available in drop turn locking and mechanical locking designs
- Terminal blocks available in varying designs with multiple terminals
- Telescoping test stations with separate top and bottom sections
- Length of box as desired by customer
- Available with or without flared or squared base to prevent pull-out or settling
- Custom lettering on lid available
- These boxes can also be utilized as a tracer wire or locating box

3" SHAFT CATHODIC PROTECTION TEST BOXES



P306 TEST



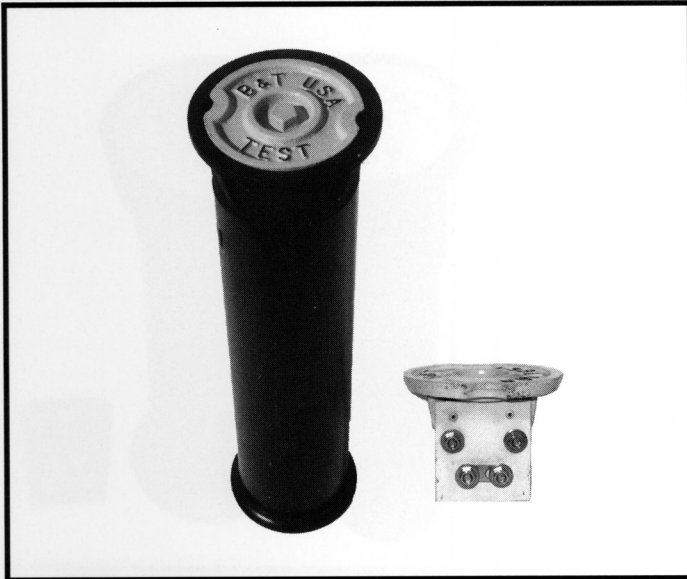
P334DT TEST

Catalog Number	Shaft Size ID	Lid Size O.D.	Approx. Wt. Lbs
P334DT TEST	3"	4 1/2"	7
P306 TEST	3"	5 3/4"	11

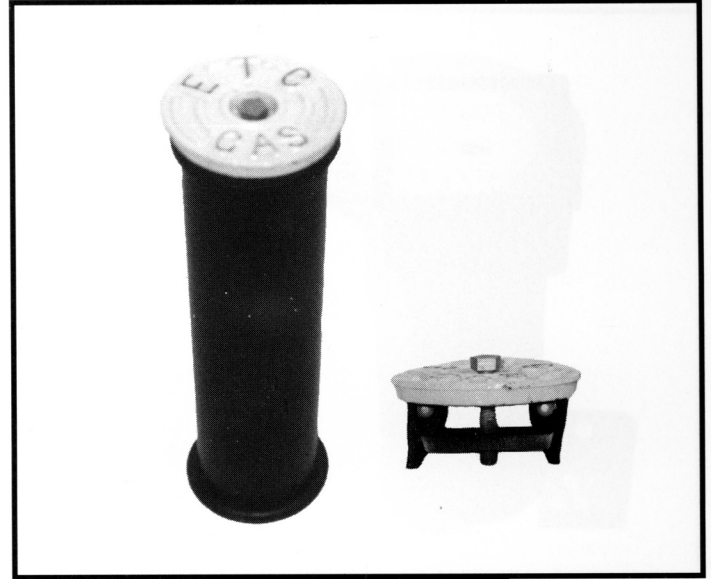
~ Features and Options Available:

- Cast iron rim and lid, ABS plastic
- Lids available in drop turn locking and mechanical locking designs
- Terminal blocks available in varying designs with multiple terminals
- Telescoping test stations with separate top and bottom sections
- Available with or without flared base to prevent pull-out or settling
- Length of box as desired by customer
- Custom lettering on lid available

4" SHAFT CATHODIC PROTECTION TEXT BOXES



P445 DT TEST



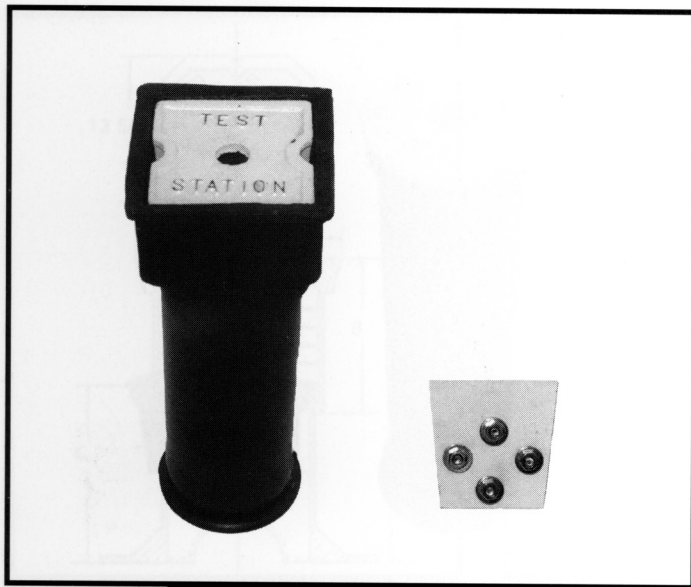
E.T.C. TEST

Catalog Number	Shaft Size ID	Lid Size O.D.	Approx. Wt. Lbs
P445 DT TEST	4"	4 3/4"	5
E.T.C. TEST	4"	5 1/2"	7

~ Features and Options Available:

- Cast iron rim and lid, ABS plastic body
- Lids available in drop turn locking and mechanical locking designs
- Terminal blocks available in varying designs with multiple terminals
- Telescoping test stations with separate top and bottom sections
- Available with or without flared base to prevent pull-out or settling
- Custom lettering on lid available
- Length of box as desired by customer

4" SHAFT CATHODIC PROTECTION TEST BOXES



P475SQ. TEST



P465 TEST

Catalog Number	Shaft Size ID	Lid Size O.D.	Approx. Wt. Lbs
P475SQ. TEST	4"	4 3/4"	13
P456 TEST	4"	4 1/2"	14

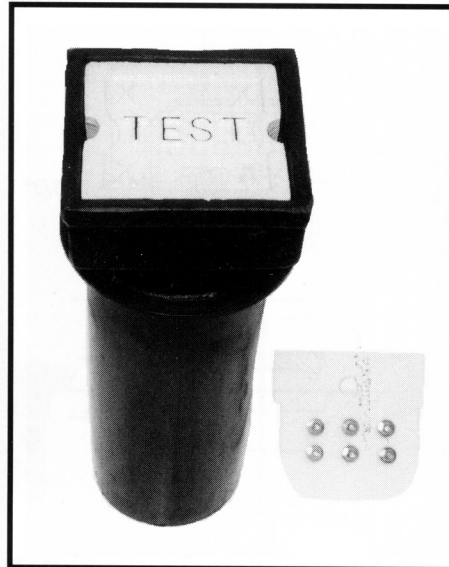
~ Features and Options Available:

- Cast iron rim and lid, ABS plastic body
- Drop in lid designs only
- Custom lettering on lid available
- Terminal blocks available in varying designs with multiple terminals
- Telescoping test stations with separate top and bottom sections
- Length of box as desired by customer
- Available with or without flared base to prevent settling
- Paving risers available for P465 Test Box 3/4 - 2"

5" SHAFT CATHODIC PROTECTION TEST BOXES



P525RD TEST



P525SQ TEST



EQ-5 TEST

Catalog Number	Shaft Size ID	Lid Size O.D.	Approx. Wt. Lbs
P525RD TEST	5 1/4"	7 1/2"	26
P525SQ TEST	5 1/4"	6" Sq.	23
EQ-5 TEST	5 1/4"	6"	23

~ Features and Options Available:

- Cast Iron rim and lid, ABS plastic body
- Drop in lid designs only
- Custom lettering on lid available
- Terminal blocks available in varying designs with multiple terminals
- Telescoping test stations with separate top and bottom sections
- Length of box as desired by customer
- Available with or without flared base to prevent settling
- Paving risers available for P525RD Test and EQ-5 Test

CAST IRON ROADWAY TEST BOXES

----- **FIG. #6012** -----

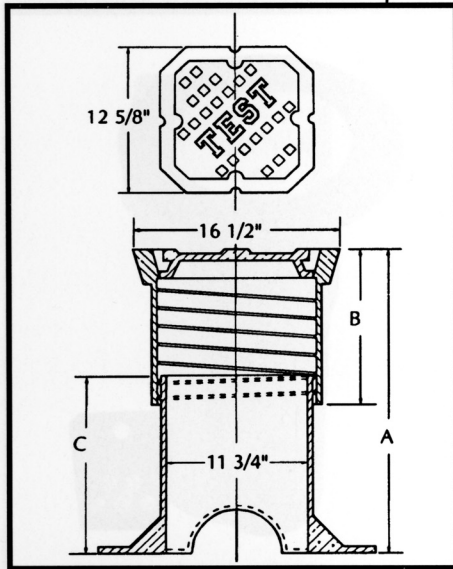


Fig. No. 6012

12" Shaft 2 Piece
Adjustable
Valve Box

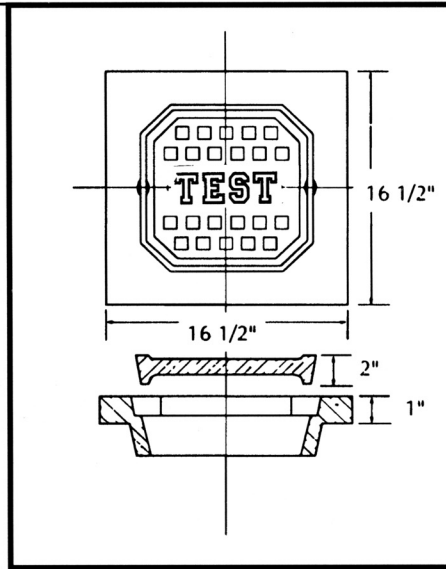


Fig. No. 6012-A

1" Raise - 55 Pounds
1 1/2" Raise - 67 Pounds
Special Cover - 27 Pounds

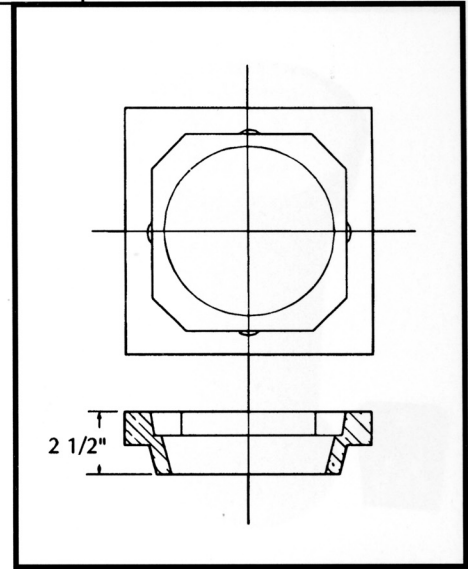


Fig. No. 6012-B

2 1/2"
Weight - 95 Pounds
Cover - 40 Pounds
(Use existing box cover)

No.	Extension Range - A	Top & Cover		Bottom		Total Weight
		Wt.	Dim. B	Wt.	Dim. C	
200	18-26	145	13	66	15 1/4	211
201	24-37	173	18 3/4	77	21 1/4	250
Weight of Cover Only = 40 Pounds						

~ Features and Options Available:

- Lids available in drop in and mechanical locking designs
- Custom lettering on lid available
- Extra large 12" round shaft screw type adjustable
- Extension available to extend box 12", Fig. 6012-X, weight 50 lbs
- Adapters available for raising box 1", 1 1/2", and 2 1/2"
(as shown in Fig. 6012-A and Fig. 6012-B above)
- 4" x 7" Arch; 22" Bottom Flange

CAST IRON ROADWAY TEST BOXES

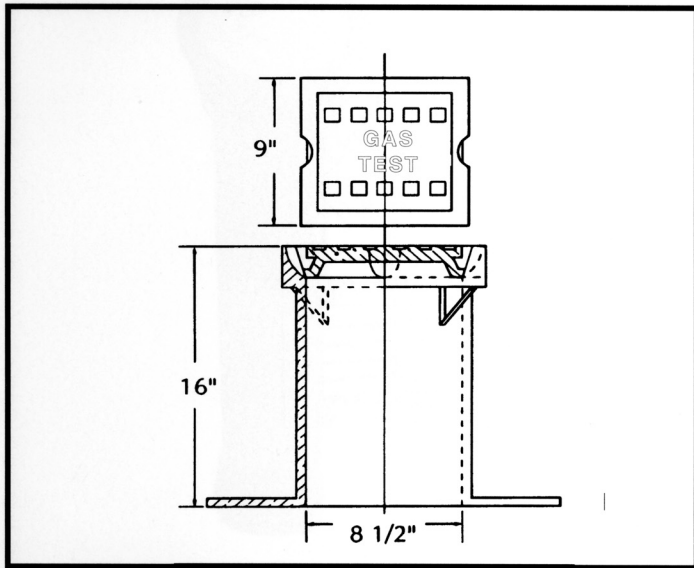


Fig. No. 6007
No. 178 Square Head Drip Box

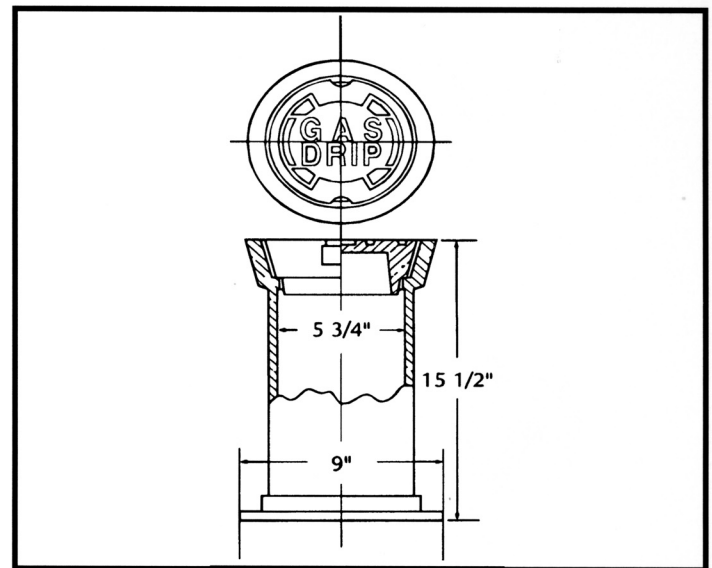


Fig. No. 6005
No. 55 Drip Box

No.	Length	Total Wt.	
178	16" Long	99	
55	15 1/2" Long	Round	Square
		45 lbs.	39 lbs.

~ Features and Options Available:

- Lids available in drop-in design for both the #178 and #55
Locking design available for #55 box only
- Custom lettering on lid available
- #178 has 14" square flange at bottom to prevent pull-out or settling
- Risers available for #178 in 1" using special cover, and 2 1/2" using existing cover
- #55 Test box can be furnished with round head or square head
- Multiple risers available for the round head #55 Test box

CAST IRON ROADWAY TEST BOXES

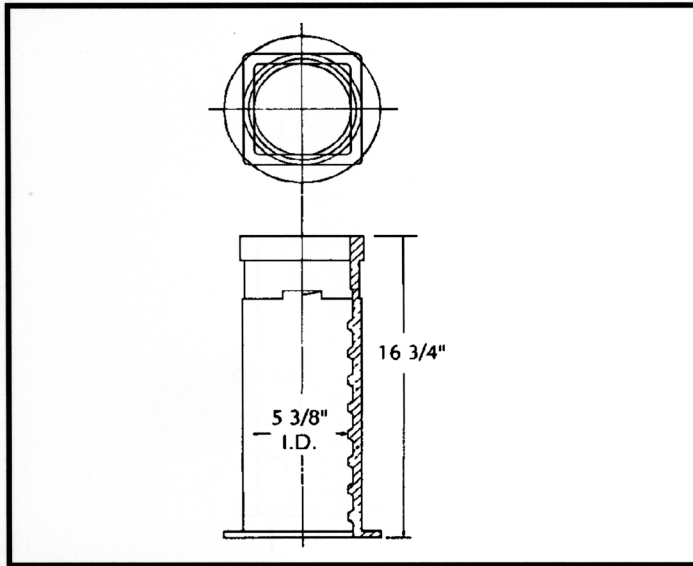


Fig. No. 6004
No. 106 Drip Box

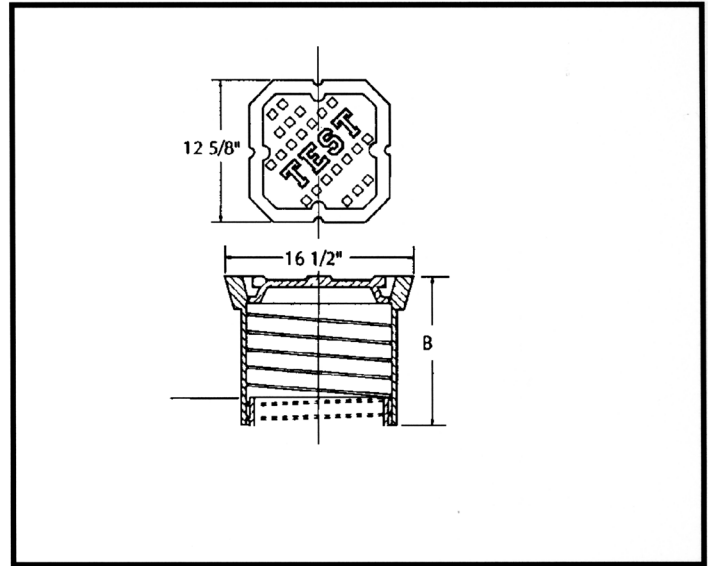


Fig. No. 6003
No. 48

No.	Length	Total Wt.
106	16 3/4"	35lbs
48	18 3/4"	189 lbs

~ Features and Options Available:

- Lids available in drop-in design, as well as mechanical locking for the #48 only
- Custom lettering on lid available
- Risers available for #48 test box in 1" and 1 1/2" using special cover, (riser available in 2 1/2" using existing cover)
- Both test boxes are flanged at bottom to prevent pull-out or settling
- Risers available for #106 in 3/4" and 1" using existing cover