

Model Designation

Specify as EDI Model AR- $asd-g.l.ttt$ where

a = active surface: M for mixed metal oxide or P for platinum

s = substrate: T for titanium or N for niobium

d = rod diameter, inches: 3 for .375, 5 for .50, 7 for .75

g = standoff length, inches: 1 to 9 in 1 inch increments

l = active length, inches: 1 to 9 in 1 inch increments

ttt = micro-inches platinum: 100, 150, 200, 250, or 300; or
electrolyte for mixed metal oxide: F, B or S for
Fresh, Brackish or Salt water

Note: A resilient mount is used between anode rod and support to minimize fatigue loading on anode rod.



electrochemical devices, inc.

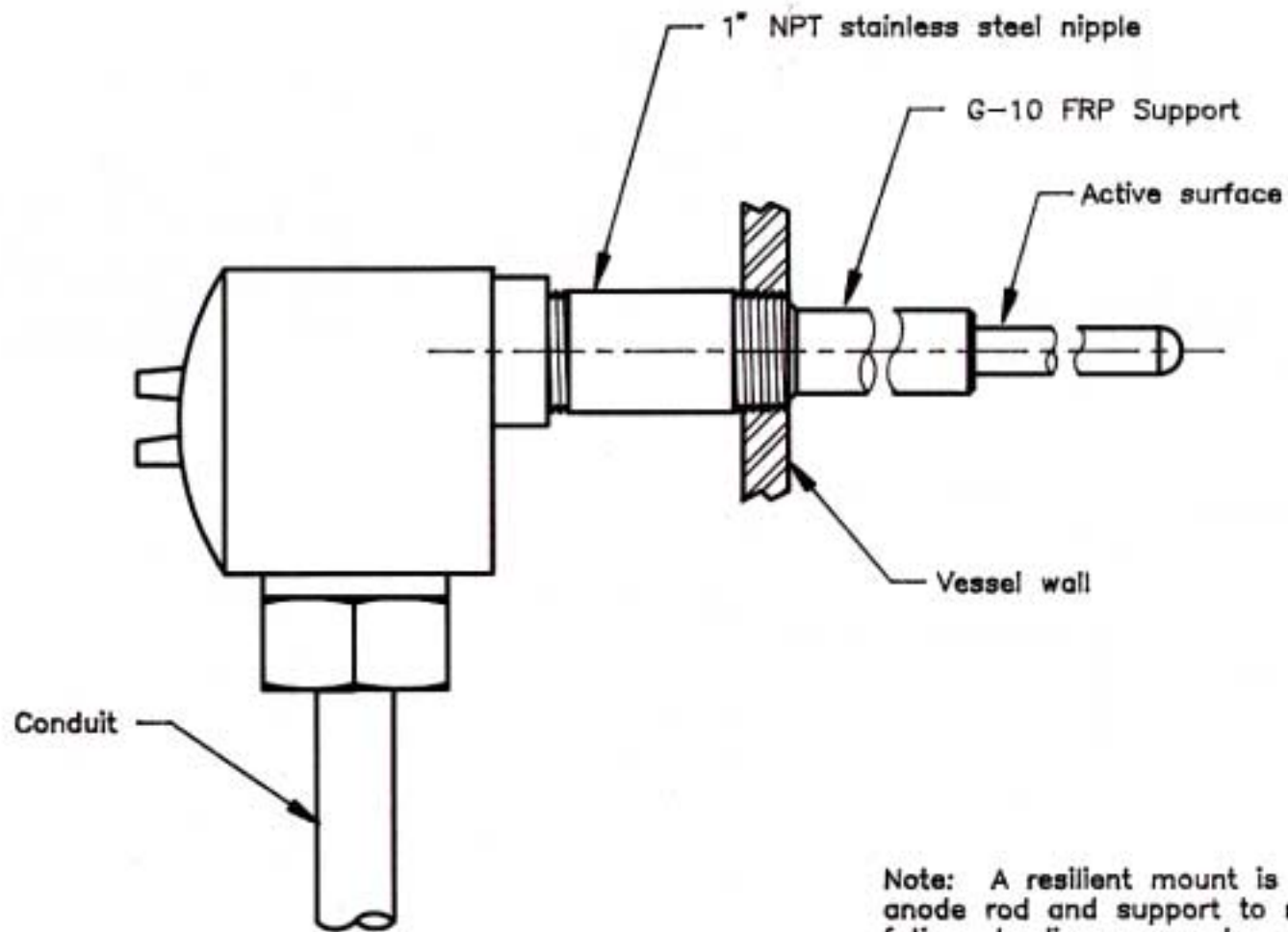
Probe Anode Assembly - Round Fitting

SCALE Full

DRAWN BY FJA

DATE 07/11/96

DRAWING NO. ARASY



Note: A resilient mount is used between anode rod and support to minimize fatigue loading on anode rod.



electrochemical devices, inc.

Probe Anode Installation (Typ.)

SCALE Half

DRAWN BY FJA

DATE 07/10/96

DRAWING NO. ARAPP1