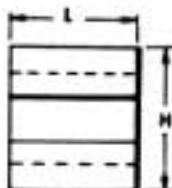




COMPRESSION CRIMPETS

TYPE YC-C COPPER CRIMPIT



Type YC-C copper crimpit connector is a range-taking C shape compression connector for making tap or parallel copper connections from #12 sol to 4/0 strand conductors.



| CATALOG NUMBER | WIRE RANGE | | L | INSTALLATION TOOLING # | | | | | STRIP LENGTH |
|----------------|---------------------|---------------------|-------|---------------------------------|------------|---|---------------------------|---|--------------|
| | RUN | TAP | | TOOLS, DIESETS, NO. OF CRIMPS ‡ | | | | | |
| | | | | DIE INDEX | HYTOOL MD6 | ‡ | HYPRESS Y25, Y28 | ‡ | |
| YC10C10* | 12 sol. - 10 str. | 12 sol. - 10 str. | 3/4 | 238 | W238 | 1 | — | — | 1/2" |
| YC8C8 | 8 sol. - 8 str. | 10 sol. - 8 str. | 1/2 | 162 | W162 | 2 | — | — | 1/2" |
| YC4C8 | 6 sol. - 4 str. | 8 sol. - 8 str. | 3/4 | BG | W-BG | 1 | U-BG | 1 | 1/4" |
| YC4C6 | | 6 sol. - 6 str. | | | | | | | |
| YC4C4 | | 4 sol. - 4 str. | | | | | | | |
| YC2C4 | 2 sol. - 2 str. | 8 sol. - 4 str. | 1/4 | C | W-C | 2 | U-C | 1 | 1" |
| YC2C2 | | 2 sol. - 2 str. | | | | | | | |
| YC28C2 | 1/0 str. - 2/0 str. | 8 sol. - 2 str. | 1 | O | — | — | U-O U-YFO | 1 | 1 1/4" |
| YC28C28 | | 1/0 str. - 2/0 str. | | | | | | | |
| YC28C2 | 3/0 str. - 4/0 str. | 6 sol. - 2 str. | 1 1/4 | D ₁ | — | — | U-D ₁ U-YFD | 1 | 1 1/4" |
| YC28C28 | | 1/0 str. - 2/0 str. | | | | | | | |
| YC28C28 | | 3/0 str. - 4/0 str. | | | | | | | |

* Not UL Listed

‡ Number of Crimps

• See tooling sections of this catalog for complete tool and die listings

TYPE Y35 HYPRESS HAND OPERATED HYDRAULIC TOOL

Hook-shaped, rotatable head and "shell" designed U-dies provide extensive ram travel for installing wide range of connectors. Ram advance handle permits installer to grip connectors in tool and slip over conductor prior to crimping. Ram retraction controlled by trigger located at lever hand grip. Neoprene insulated, except for head. Supplied with steel carrying case. Dies ordered separately.



| TOOL SPECIFICATIONS | Y35 |
|---------------------|---------|
| Force Developed | 12 tons |
| Weight Less Case | 13 lbs. |
| Maximum Width | 6" |
| Maximum Height | 24" |

TYPES KS & KS-3 SERVIT[®] For Copper, Copperweld

Compact, high strength, high copper alloy SERVIT split-bolt has free-running threads, and easy to grip wrench flats. Highly resistant to season cracking and corrosion, the SERVIT provides maximum pressure and assures secure connection on all combinations of run and tap conductors. Type KS-3, similar to Type KS, accommodates 3 maximum size conductors.



| CATALOG NUMBER | CONDUCTOR | | | | | |
|----------------|-----------------------------|------------------------|------------|-------|--------|--------|
| | COPPER | | COOPERWELD | | | |
| | RANGE FOR EQUAL RUN AND TAP | MIN. TAP WITH MAX. RUN | MAXIMUM | | | |
| | | | SOL. | STR. | TYPE A | TYPE D |
| KS90* | 12 STR.-10 STR. | 16 STR. | #10 | — | — | — |
| KS15 | 10 STR.-8 STR. | 14 STR. | #8 | — | — | — |
| KS17 | 8 STR.-6 SOL. | 14 STR. | #6 | 3 #12 | 8A | 9½D |
| KS17-3* | 8 STR.-6 SOL. | 14 STR. | #6 | 3 #12 | 8A | 9½D |
| KS20 | 8 STR.-4 SOL. | 14 STR. | #4 | 3 #10 | 6A | 8D |
| KS20-3* | 8 STR.-4 SOL. | 14 STR. | #4 | 3 #10 | 6A | 8D |
| KS22 | 6 STR.-2 SOL. | 14 STR. | #2 | 3 #8 | 4A | 6D |
| KS22-3* | 6 STR.-2 SOL. | 14 STR. | #2 | 3 #8 | 4A | 6D |
| KS23 | 6 STR.-2 STR. | 14 STR. | #1 | 3 #7 | 3A | 5D |
| KS25 | 4 STR.-1/0 STR. | 14 STR. | 2/0 | 3 #5 | 2A | 4D |
| KS26 | 2 STR.-2/0 STR. | 14 STR. | 3/0 | 7 #7 | — | — |
| KS27 | 1 STR.-3/0 STR. | 8 SOL. | — | — | — | — |
| KS29 | 1 STR.-250 | 8 STR. | 4/0 | 7 #5 | — | — |
| KS31 | 1/0 STR.-350 | 1/0 STR. | — | 19 #8 | — | — |
| KS34 | 2/0 STR.-500 | 2/0 STR. | — | 19 #6 | — | — |
| KS39 | 4/0 STR.-750 | 4/0 STR. | — | 19 #5 | — | — |
| KS44 | 300-1000 | 4/0 STR. | — | — | — | — |

*Not UL Listed