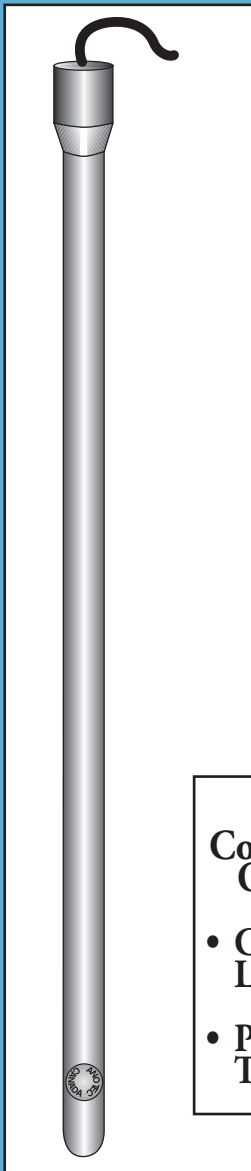


## ANOTEC Stick Anodes

### Solid Chill Cast High Silicon Iron for Impressed Current Cathodic Protection



#### Product Description

#### Composition (weight %)

Grade 3 ASTM A518	
Silicon	14.20 - 14.75%
Chromium	3.25 - 5.00%
Carbon	0.70 - 1.10%
Manganese	1.50% max
Copper	0.50% max
Molybdenum	0.20% max

#### "Chill Cast" in Metal Molds

- Assures consistent weight, greater density less flake graphite grain boundary, and lower chemical segregation than Sand Cast Anodes.
- ANOTEC Chill Cast structure is similar to "Spin Cast" Tubular Anodes.

#### Special Features

- **More than Twice as Strong**  
Independent laboratory tests confirm that Anotec Anodes withstand drop impact tests to more than twice the height of Sand Cast Anodes.
- **Quality Control**  
ISO 9001 Quality Control assures: chemistry (by spectrometer), impact strength and production lot traceability.
- **Performance**  
Accelerated Corrosion Tests confirm that Anotec Chill Cast anodes perform significantly better (up to 19%) than Sand Cast anodes in chloride and sulphate environments. Test reports available on request.
- **Spherical Tip**  
Prevents hang-up when lowering into deep wells.

#### Cable Connection Options

- **Caulked Lead**
- **Pin Type**

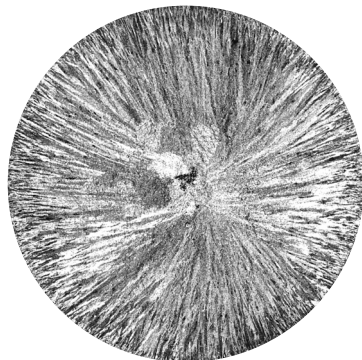
# Anotec Solid Chill Cast Anodes

## Grain Structure Makes a Difference

### A typical ANOTEC Anode Cross Section

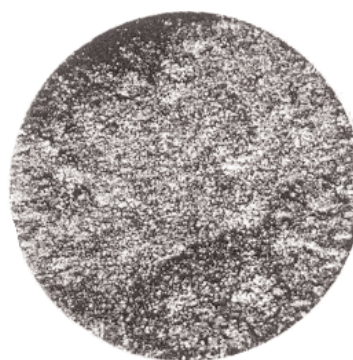
A dense skin of minute columnar grains and a dense core of equiaxial grains.

Occasionally, very fine interdendritic porosity at center. Predominantly spheroidal shaped graphite. Similar to the structure of vacuum refined High Silicon Iron.

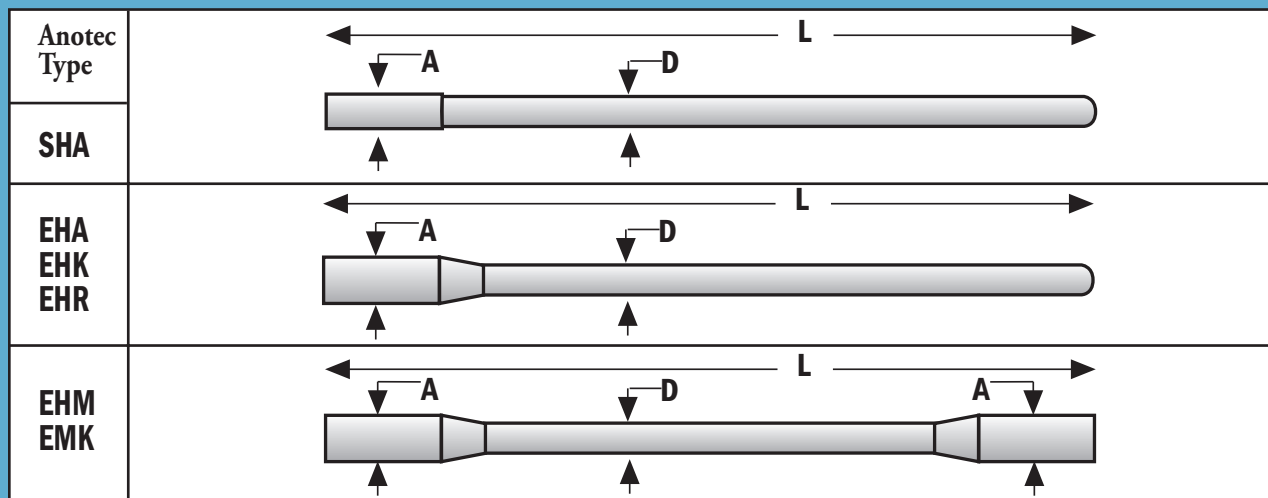


**Stronger, Longer Lasting**

### A typical Cross Section of a Sand Cast Anode



Skin of non-porous equiaxial grains. Remaining section relatively porous from interdendritic shrinkage and porosity. Predominantly flake graphite with larger boundary areas than equivalent spheroidal graphite.



Anotec Type	Nominal Dimensions Inches (cm)			Nominal Weight Lb ( Kg )	Nominal Area Sq. Ft. ( M <sup>2</sup> )	Shipping Information		
	D	L	A			Anodes per crate	Gross Lbs	Weight Kgs
SHA	2.0 (5.1)	60 (150)	2.2 (5.6)	43 (20)	2.6 (0.24)	50	2300	1044
EHA	2.0 (5.1)	60 (150)	3.0 (7.6)	44 (20)	2.7 (0.25)	50	2350	1066
EHM	2.1 (5.3)	60 (150)	3.0 (7.6)	60 (27)	2.8 (0.26)	45	2850	1293
EHK	1.5 (3.8)	60 (150)	2.2 (5.6)	26 (12)	2.0 (0.19)	70	1970	894
EMK	1.5 (3.8)	60 (150)	2.2 (5.6)	27 (12.2)	2.1 (0.20)	60	1770	803
EHR	3.0 (7.6)	60 (150)	4.0 (10.2)	110 (50)	4.0 (0.36)	24	2790	1266

Crate dimensions, nominal: 32W x 22H x 62L inches = 25.2 Ft<sup>3</sup> • (81W x 56H x 158 L cm • .71 M<sup>3</sup>)